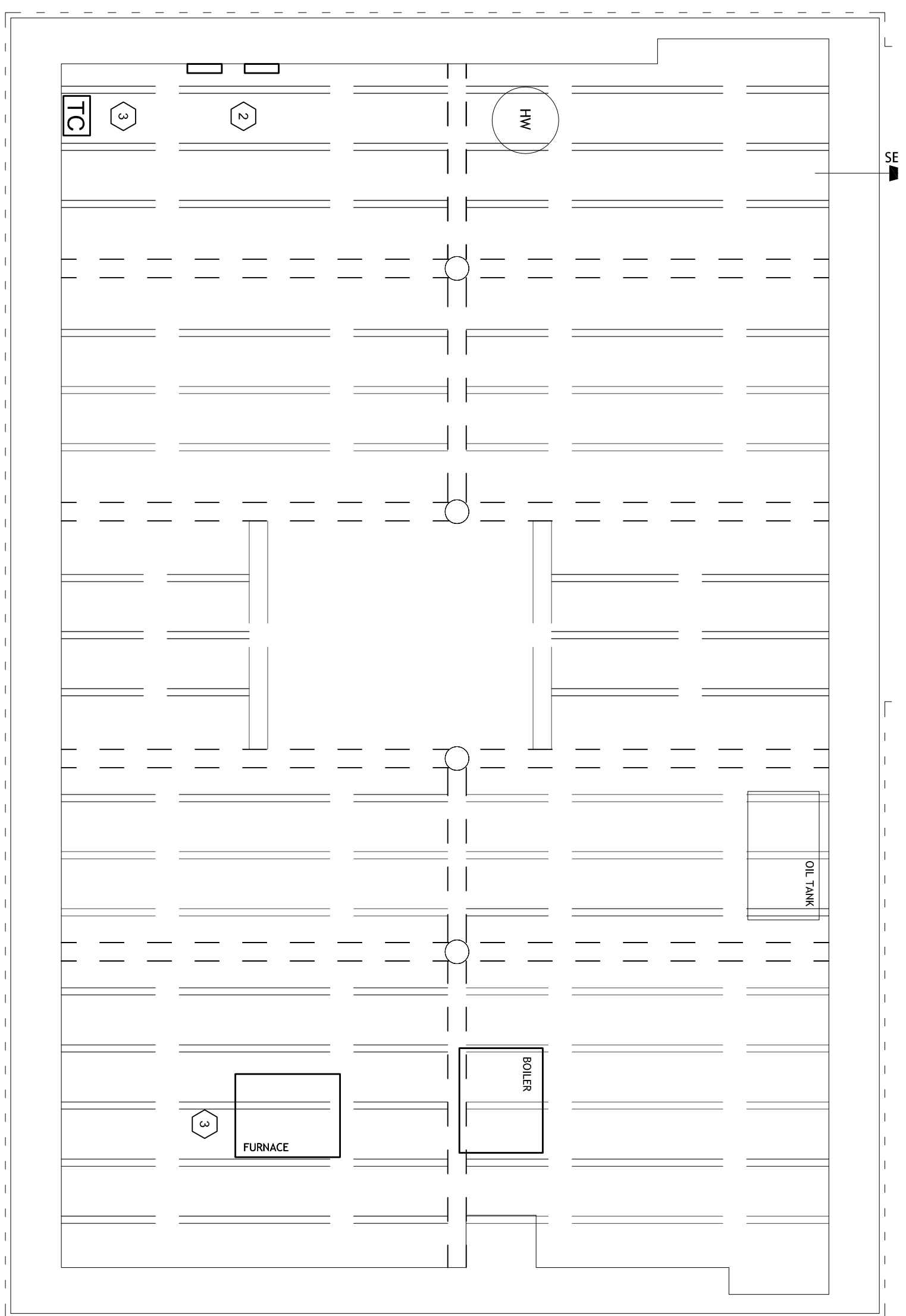
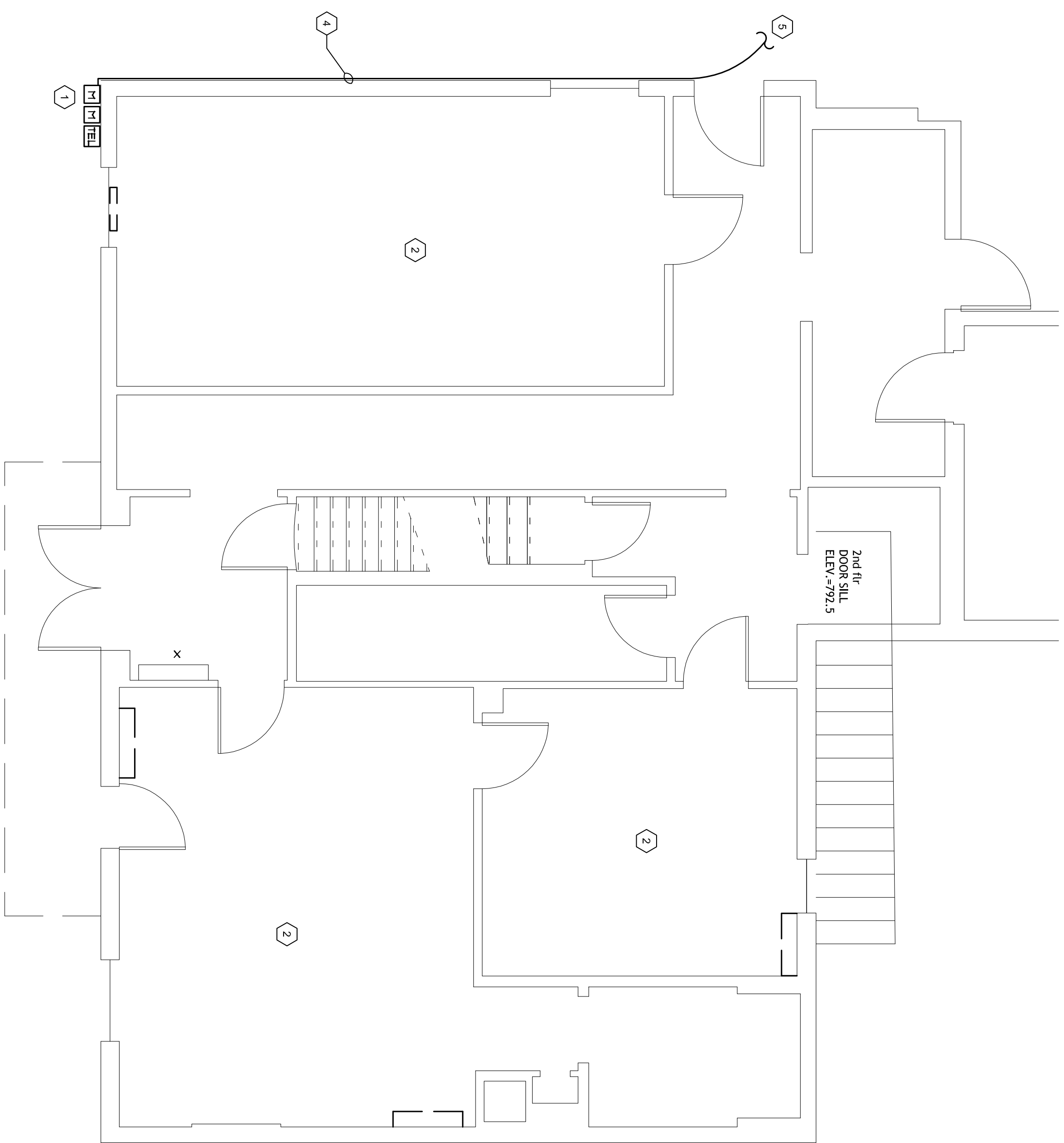


1 SECOND FLOOR PLAN  
EJØ SCALE: 1/4" = 1'-0"



3 BASEMENT FLOOR PLAN  
EJØ SCALE: 1/4" = 1'-0"



2 FIRST FLOOR PLAN  
EJØ SCALE: 1/4" = 1'-0"

**GENERAL NOTES**

1. ALL REMOVALS RELATED TO ELECTRICAL SERVICE SHALL BE REMOVED BY A LICENSED ELECTRICIAN.
2. ALL OTHER REMOVALS BY OWNER.

**CODED NOTES**

- 1) REMOVE EXISTING RISER CABLE AND VENTERS AND LINE DUCTS FOR ADDITIONAL RECONFIGURATION. TELEPHONE SERVICE BOX SHALL REMAIN.
- 2) ALL REMOVALS REGARDING WIRING, PANELBOARDS, LIGHT FIXTURES MECHANICAL EQUIPMENT, ETC. OWNERS RESPONSIBILITY TO NEW ELECTRICAL.
- 3) EXISTING TIE/CLOCK TO REMAIN. PARALLEL TO NEW ELECTRICAL.
- 4) EXISTING SERVICE SET CABLE TO BE REMOVED AND REPLACED WITH NEW IN SAME LOCATION.
- 5) EXISTING SERIAL SERVICE CABLE TO REMAIN. PARALLEL TO NEW SERVICE CABLE. SPlice TO NEW SERVICE CABLE.

ARCHITECTURAL BUREAU  
JOE IUVIENE AIA  
P.O. BOX 238 - 29 MAIN STREET  
CHATHAM NEW YORK 12037  
(518)-392-3650

**PLUMB EXCEL GROUP**  
ENGINEERING, P.C.  
29 British American Boulevard  
Latham, New York 12110  
PHONE: 518.464.0412 FAX: 518.464.0834

ADDITIONS RECONFIGURATION  
AND RENOVATION  
NEW LEBANON TOWN HALL  
14755 Route 22  
NEW LEBANON NY

**ELECTRICAL  
REMOVAL PLAN**

REVISIONS

SCALE: AS NOTED  
DRAWN BY: APACELLI  
DESIGNED BY: APACELLI  
CHECKED BY: DAH

9/08/10

**EDI**