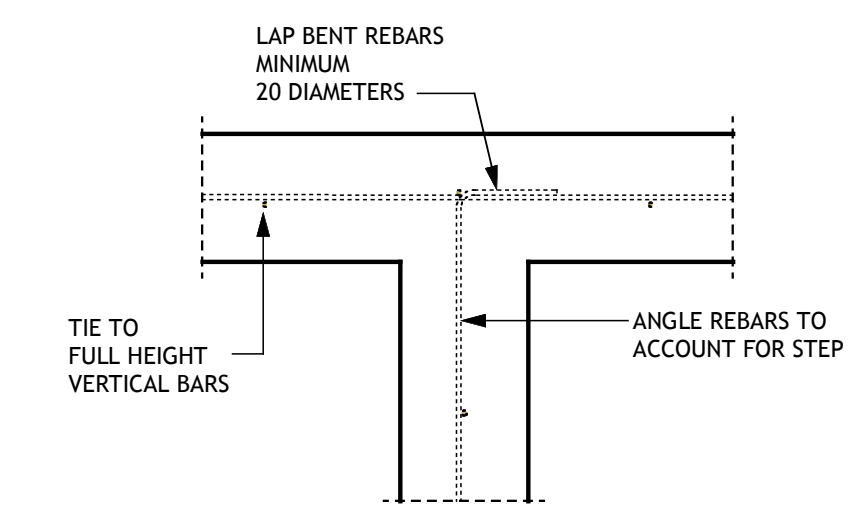
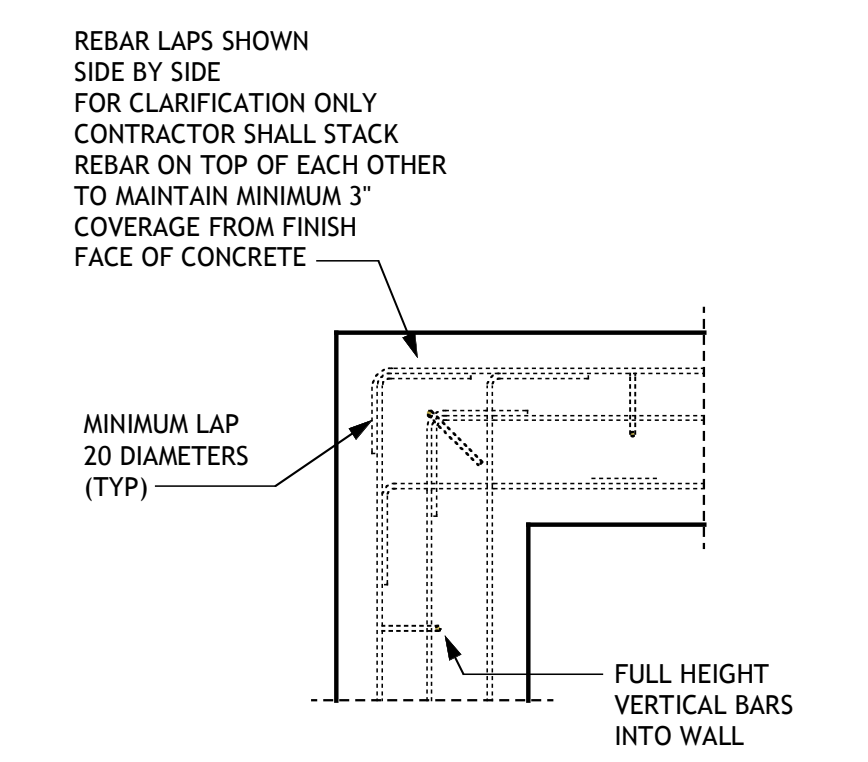


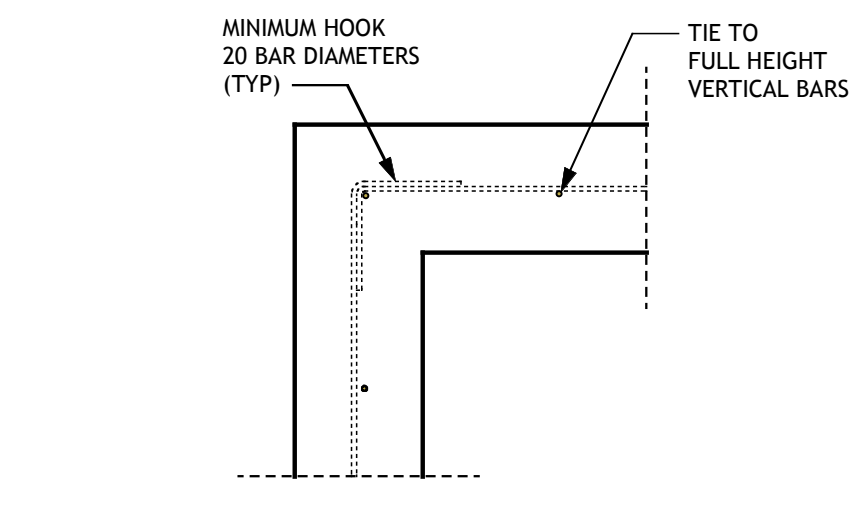
1 TYPICAL FOOTING T INTERSECTION
 Scale: 1/2" = 1'-0"



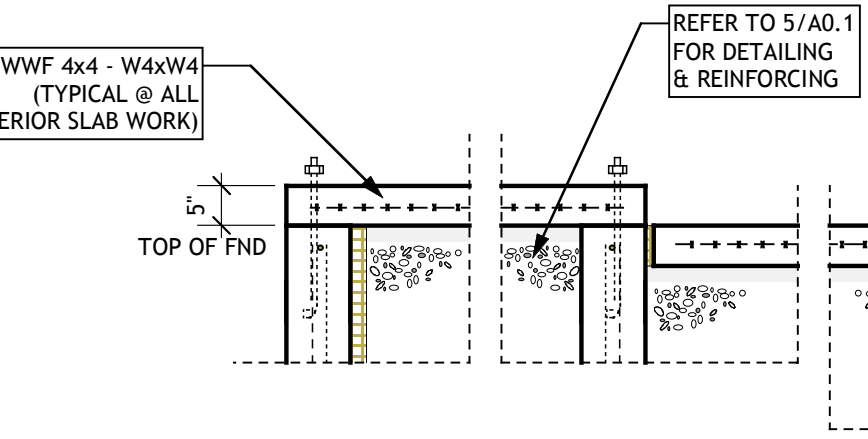
2 TYPICAL WALL T INTERSECTION
 Scale: 1/2" = 1'-0"



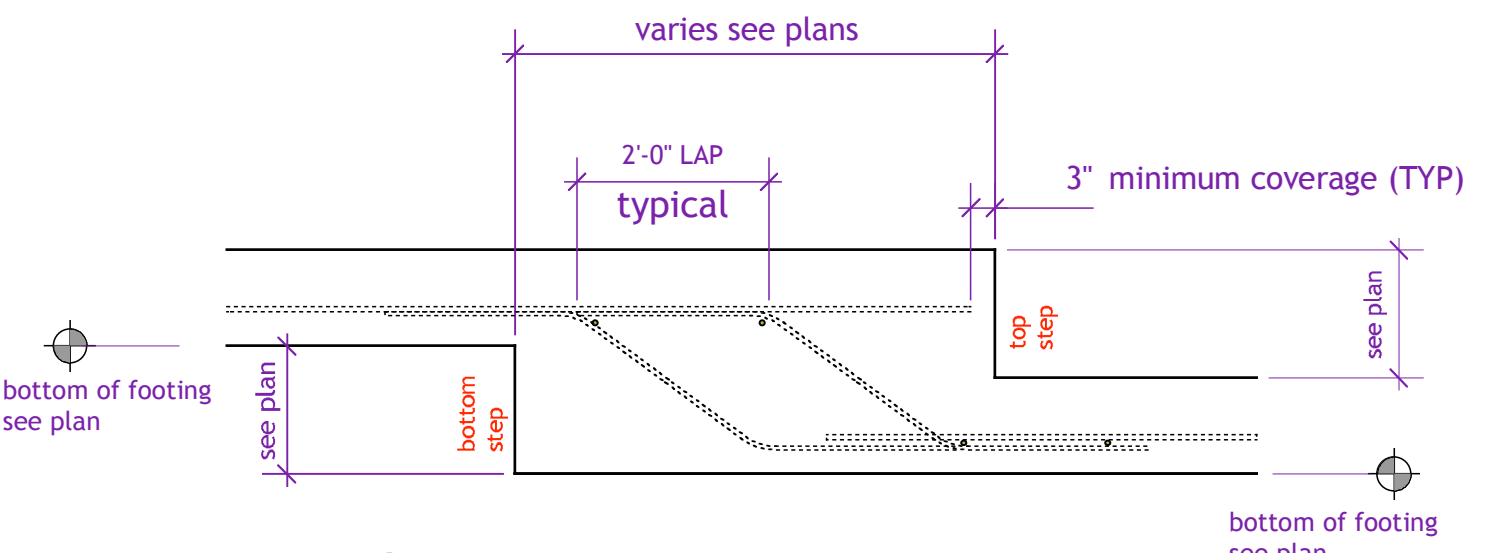
3 TYPICAL FOOTING CORNER INTERSECTION
 Scale: 1/2" = 1'-0"



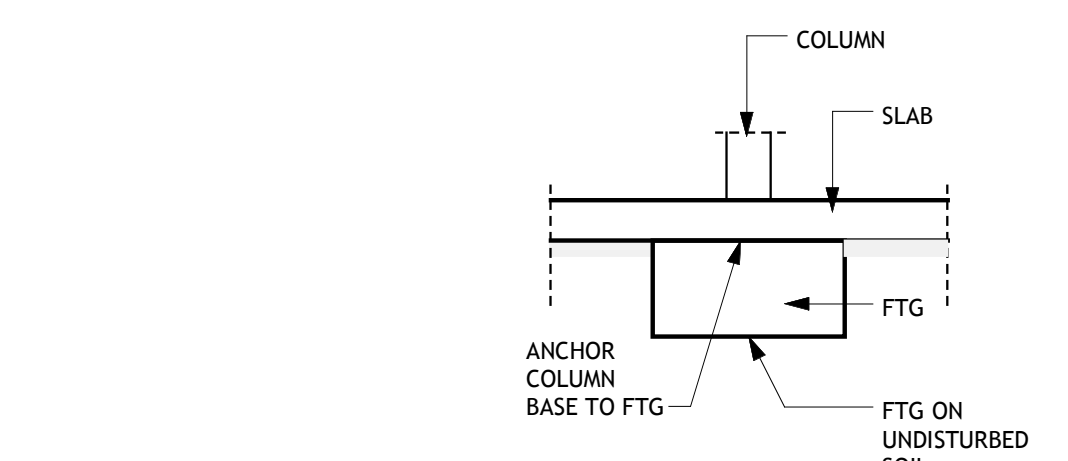
4 TYPICAL 90 DEGREE FOOTING CORNER INTERSECTION
 Scale: 1/2" = 1'-0"



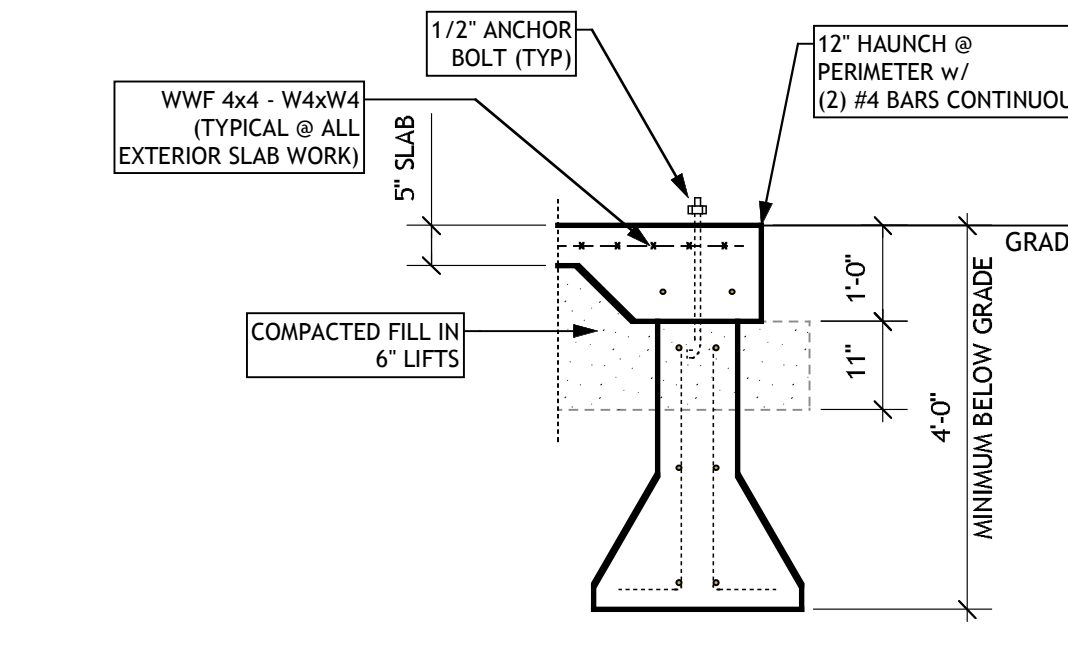
5 FOUNDATION WALL SECTION
 Scale: 1/2" = 1'-0"



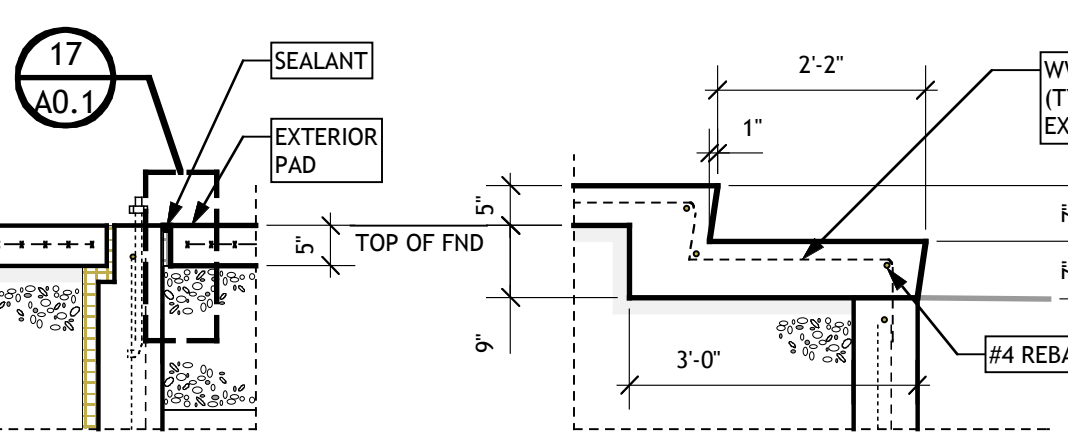
6 TYPICAL SECTION @ FOOTING STEP
 Scale: 1/2" = 1'-0"



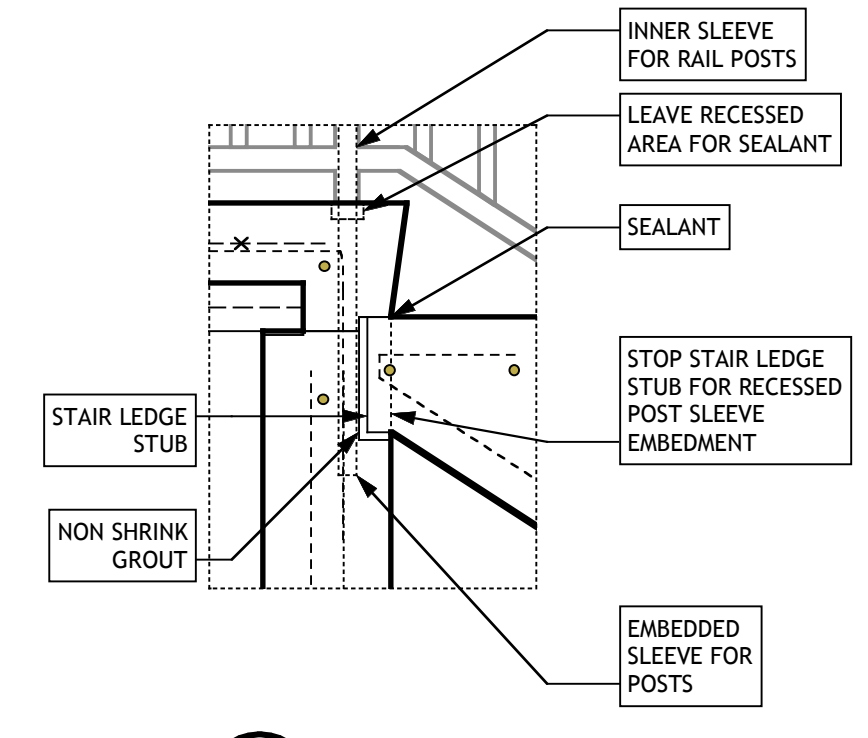
7 COLUMN FOOTING
 Scale: 1/2" = 1'-0"



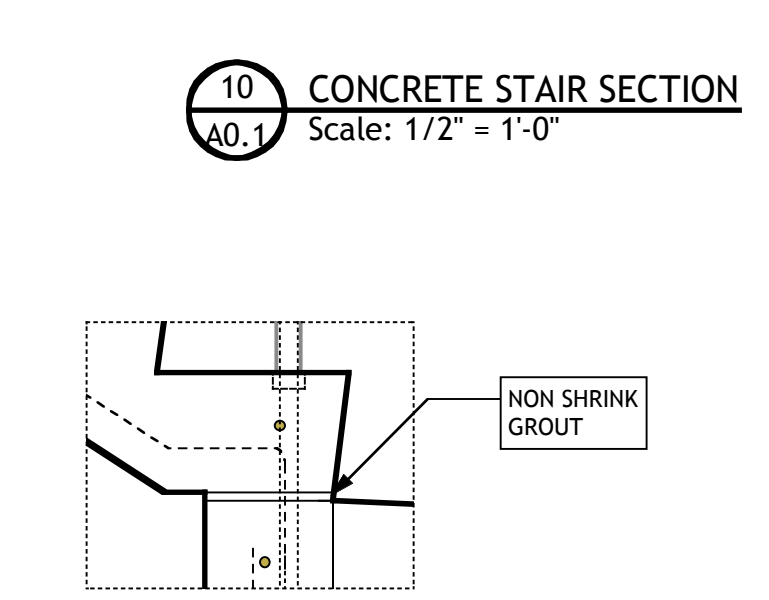
8 TYPICAL SONOTUBE FOOTING
 Scale: 1/2" = 1'-0"



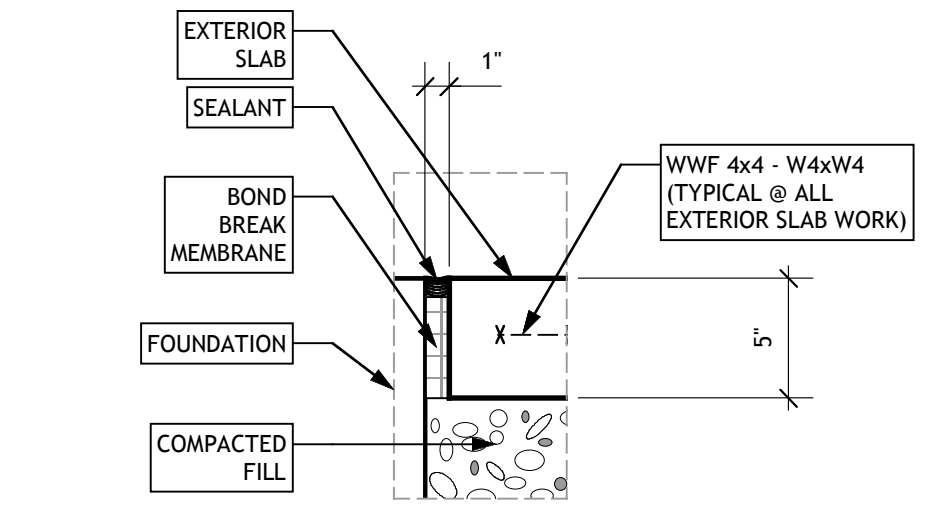
9 CONCRETE STAIR SECTION
 Scale: 1/2" = 1'-0"



10 CONCRETE STAIR SECTION
 Scale: 1/2" = 1'-0"



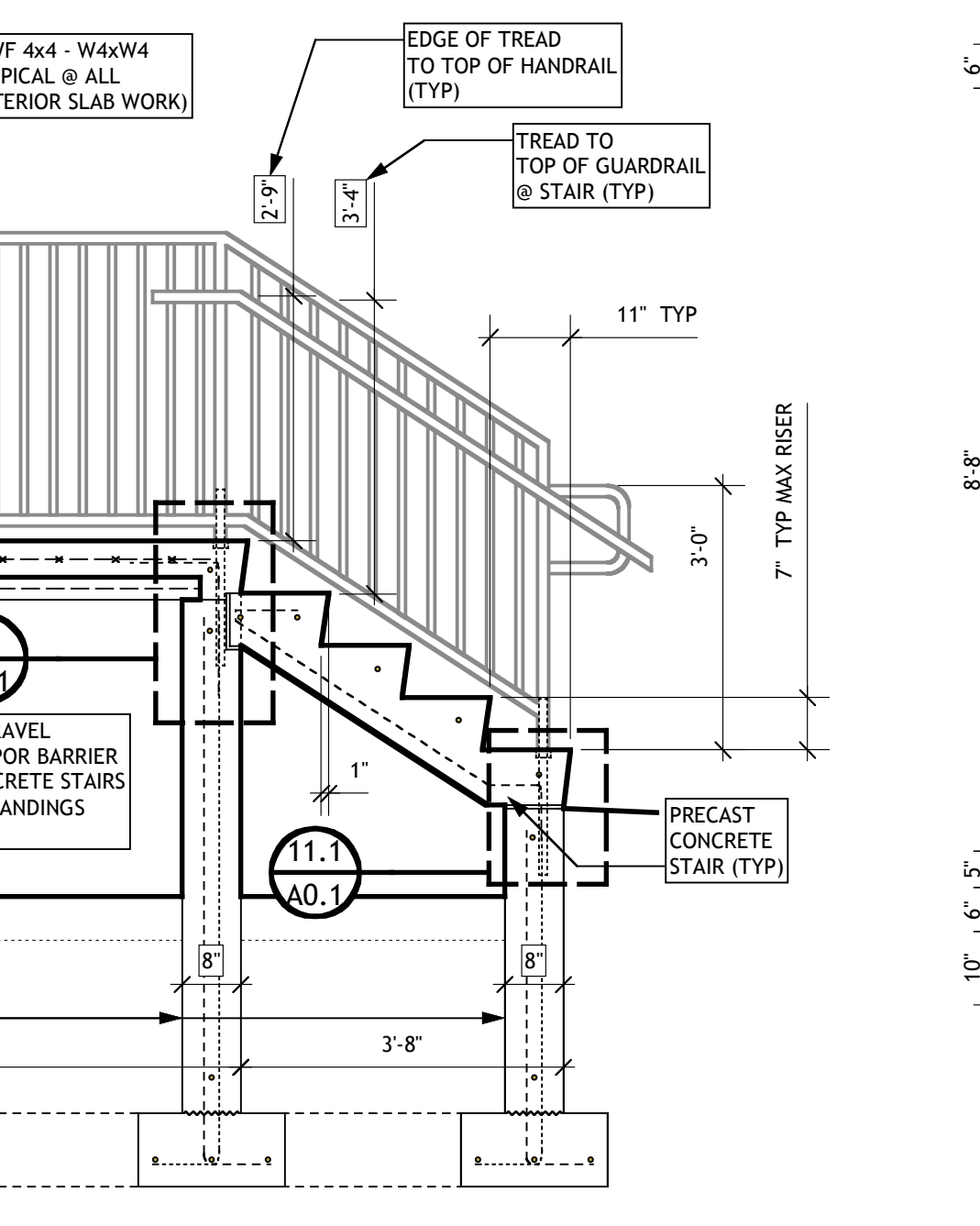
11 CONCRETE STAIR DETAILS
 Scale: 1/2" = 1'-0"



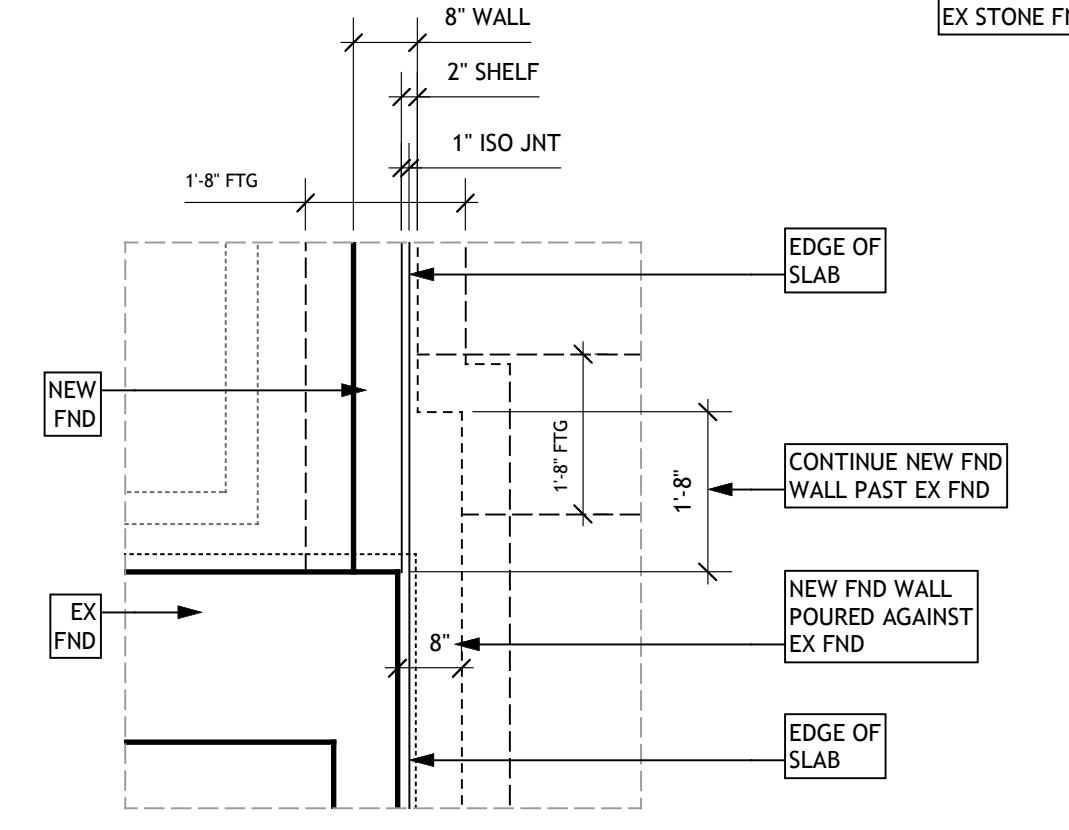
12 PLAN @ FND WALL THKNS CHANGE
 Scale: 1/2" = 1'-0"

17 SECTION @ EXT SLAB TO FND
 Scale: 1 1/2" = 1'-0"

14 CONCRETE STAIR SECTION
 Scale: 1/2" = 1'-0"



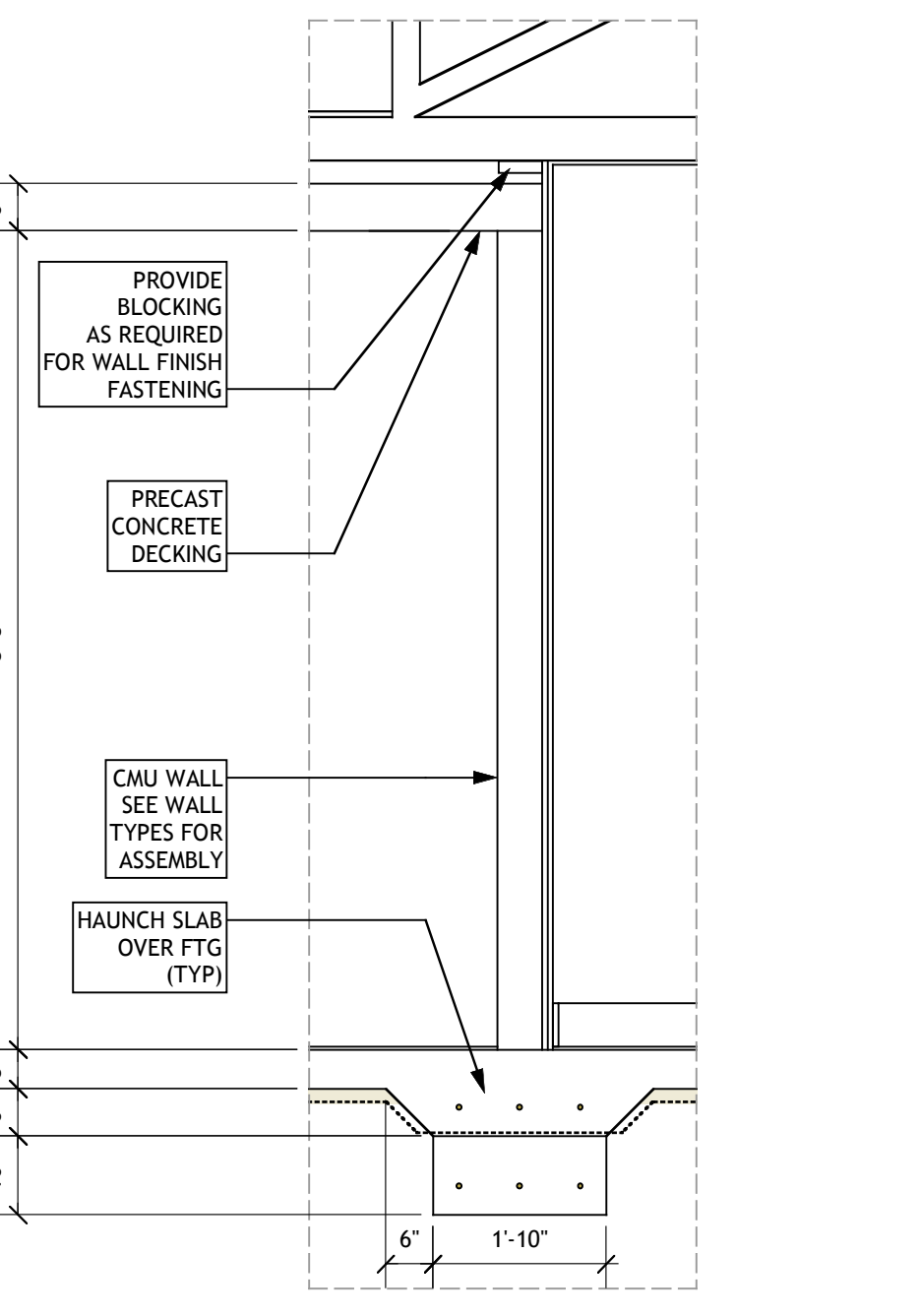
10 CONCRETE STAIR SECTION
 Scale: 1/2" = 1'-0"



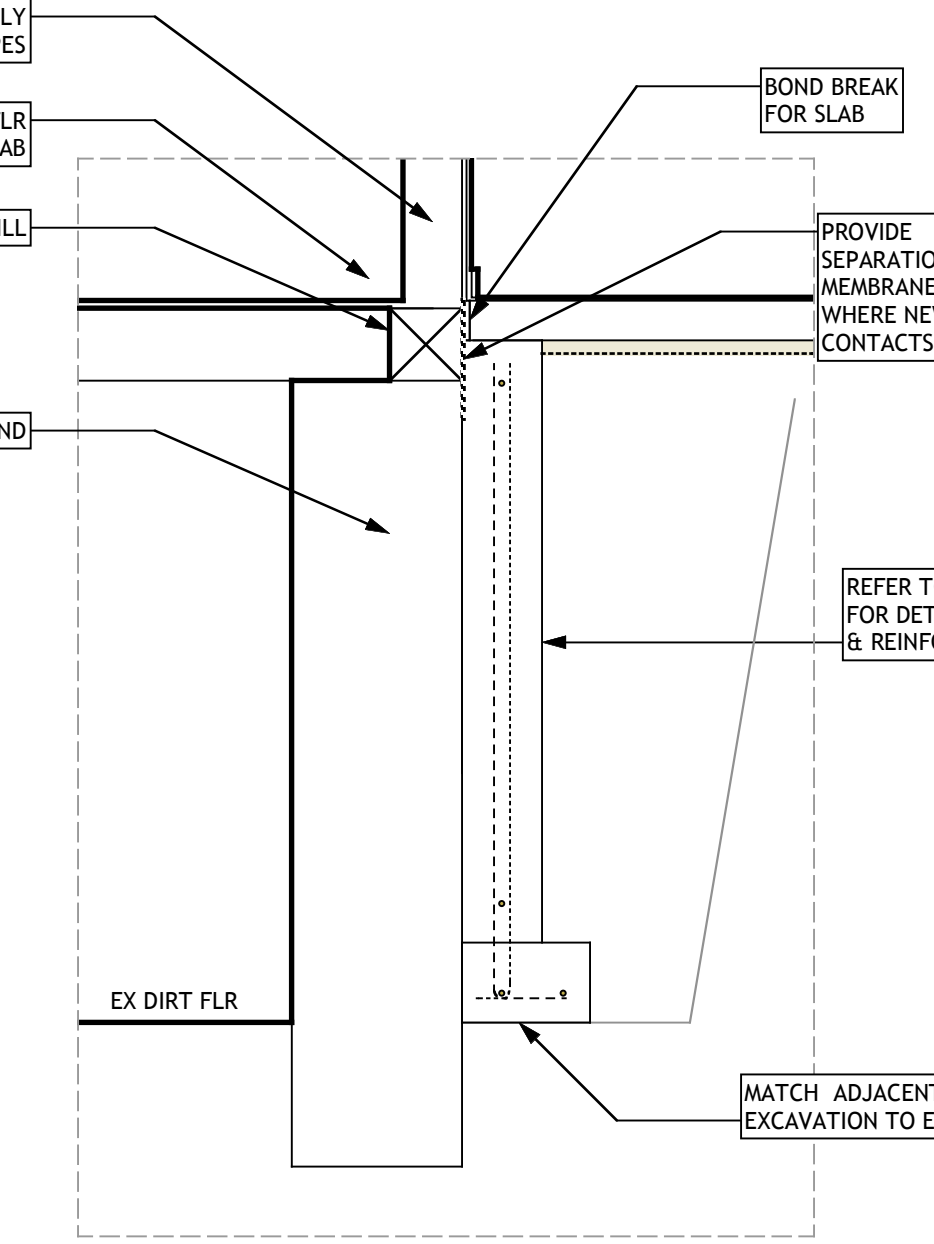
15 PARTIAL SECTION @ STAIR & LANDING
 Scale: 1/2" = 1'-0"

16 PARTIAL SECTION @ STAIR TREADS
 Scale: 1/2" = 1'-0"

18 PLAN @ EXISTING CORNER FOUNDATION w/ NEW FOUNDATION
 Scale: 1/2" = 1'-0"



13 SECTION @ RATED CEILING
 Scale: 1/2" = 1'-0"



19 SECTION @ EX FND WALL TO NEW FND WALL
 Scale: 1/2" = 1'-0"