

ROOM FINISH SCHEDULE

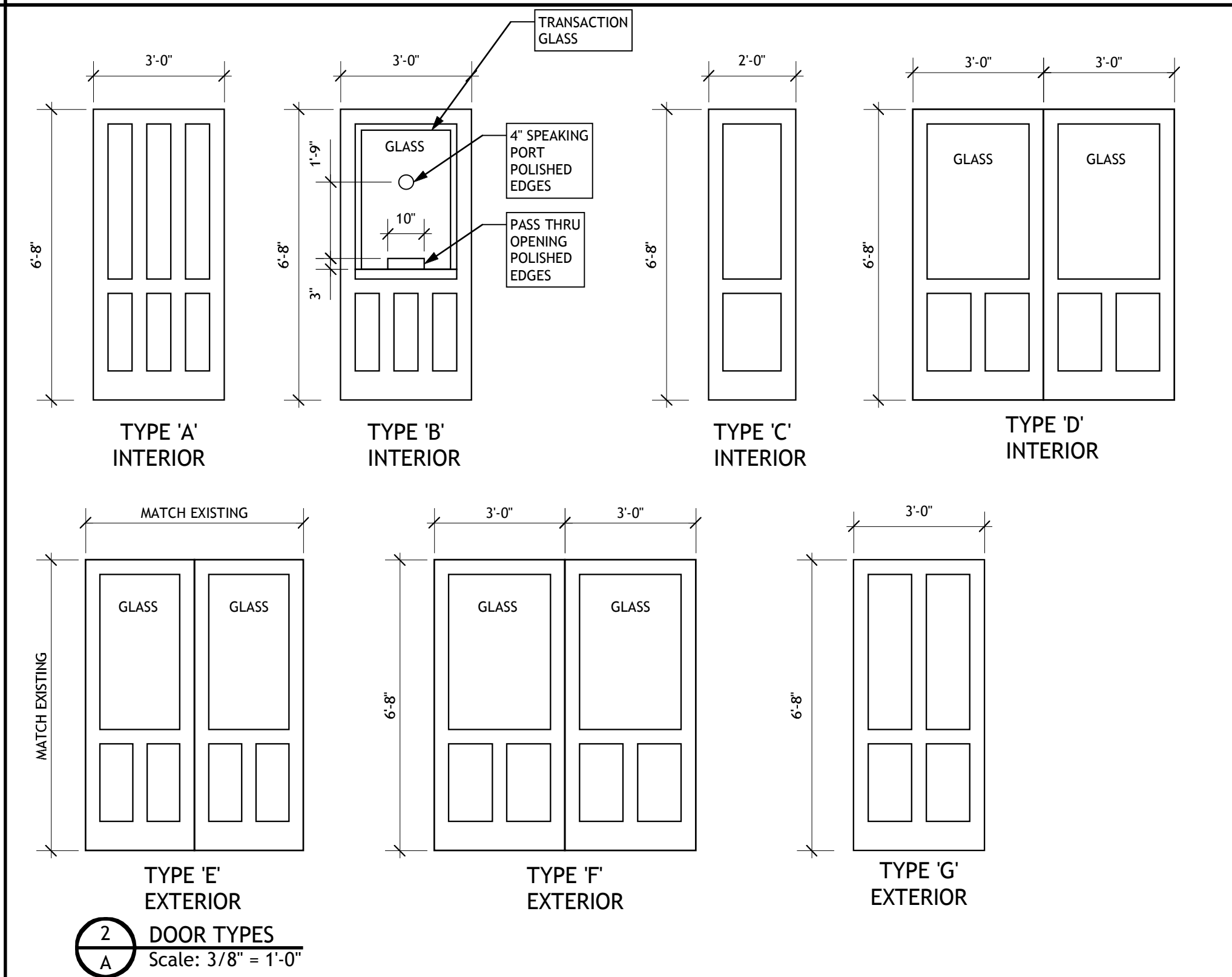
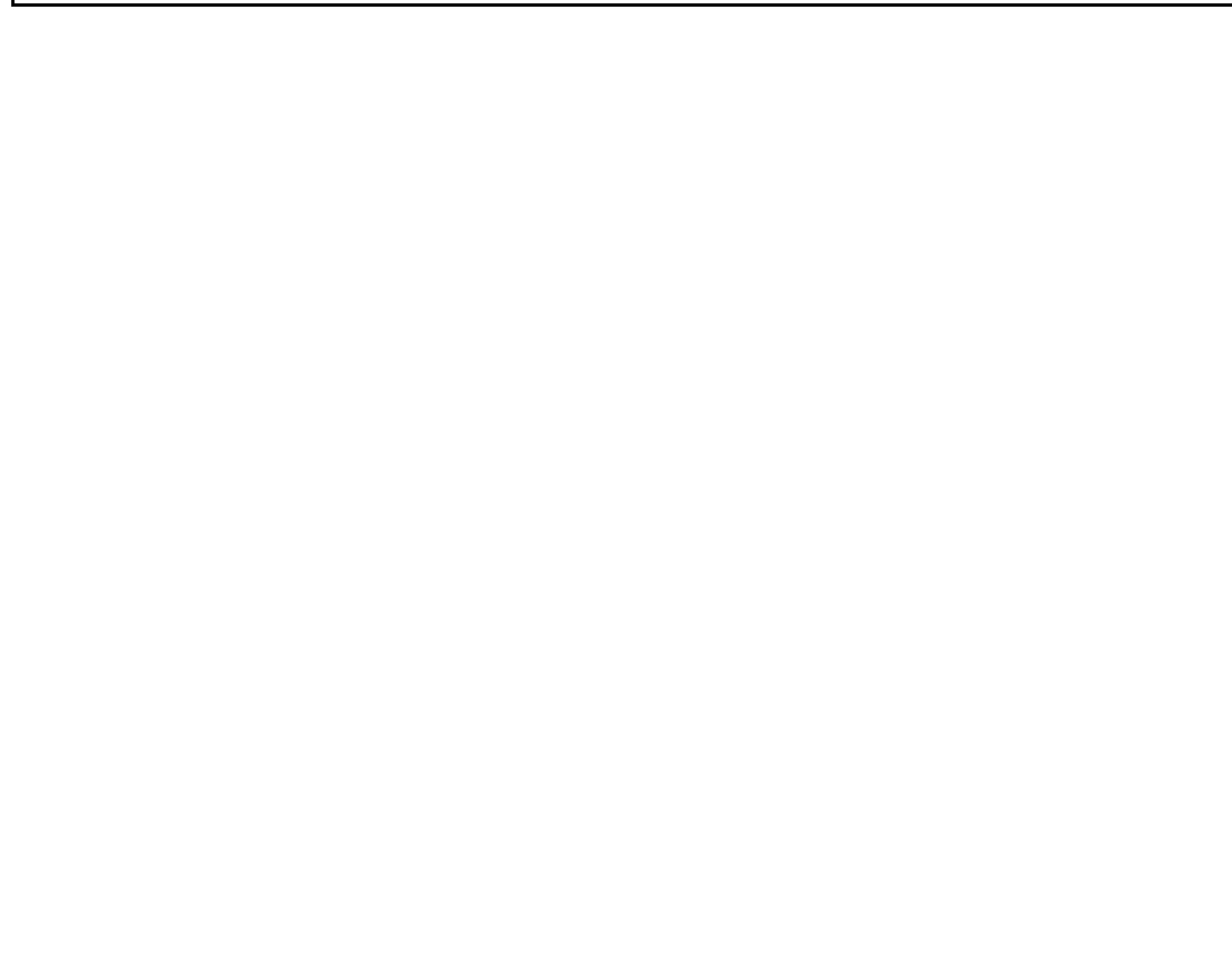
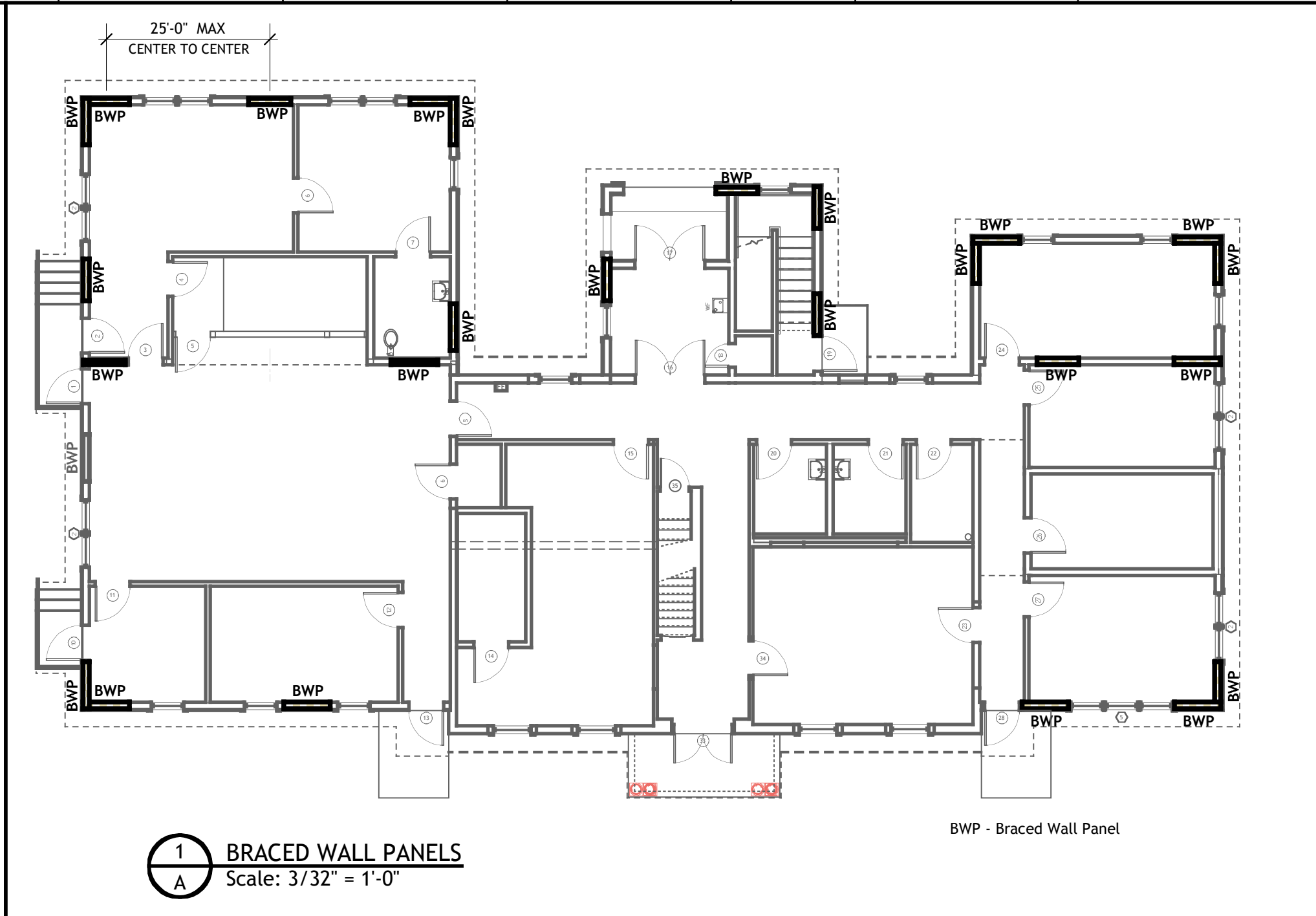
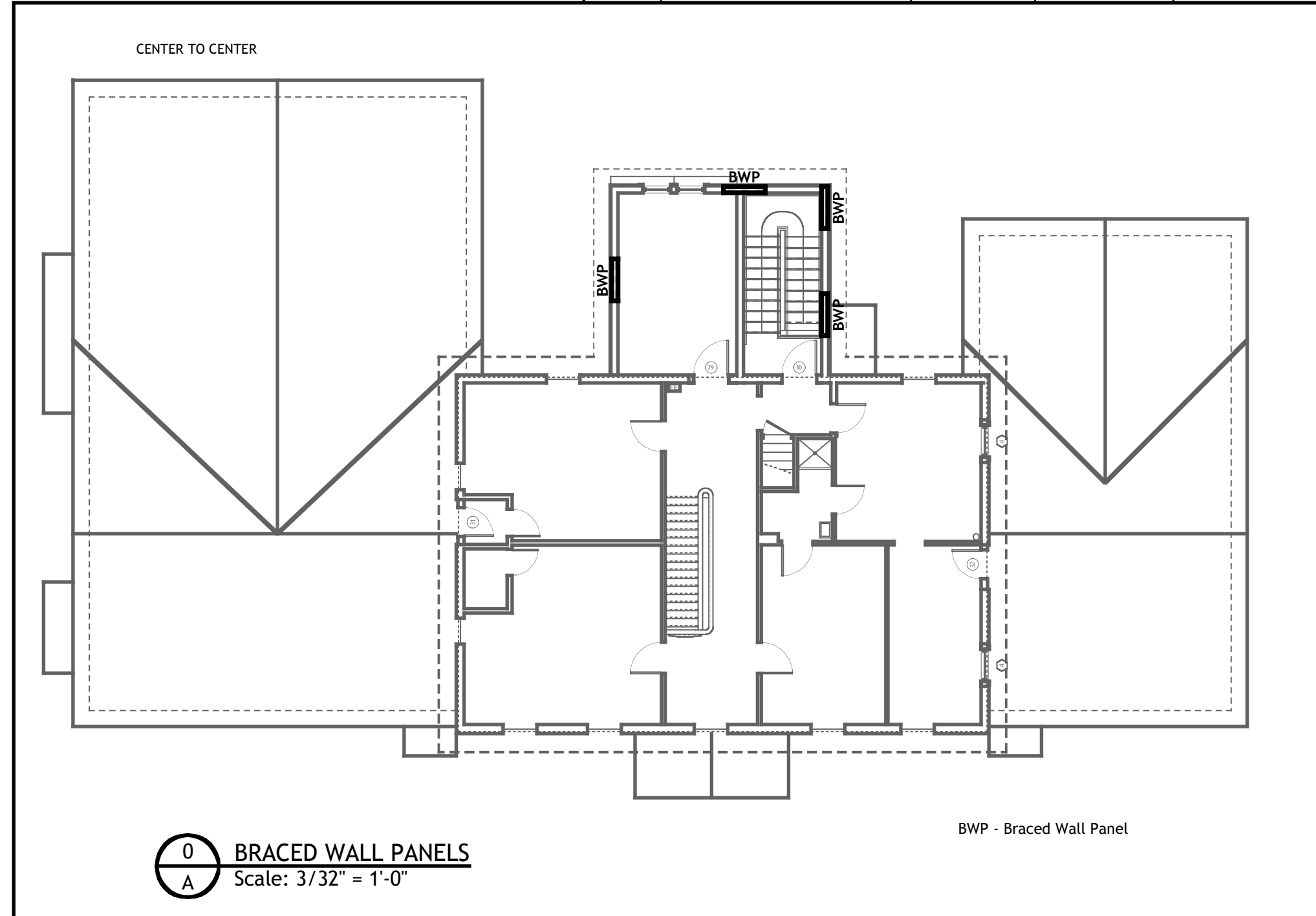
| ROOM# | ROOM NAME | FLOOR | BASE | NORTH WALL | SOUTH WALL | EAST WALL | WEST WALL | SPEC. FIN. | CEILING | NOTES |
|-------|---------------------------|-------------|--------|------------|------------|-----------|-----------|------------|---------|-----------------------|
| 001 | CLERK | CARPET TILE | PTD WD | PTD GWB | PTD GWB | PTD GWB | PTD GWB | | PTD GWB | |
| 002 | JUDGE | CARPET TILE | PTD WD | PTD GWB | PTD GWB | PTD GWB | PTD GWB | | PTD GWB | |
| 003 | FUTURE TOILET | CT | CT | PTD GWB | PTD GWB | PTD GWB | PTD GWB | | PTD GWB | |
| 004 | MEETING COURT ROOM | CARPET TILE | PTD WD | PTD GWB | PTD GWB | PTD GWB | PTD GWB | | PTD GWB | WOOD WAINSCOT @ WALLS |
| 005 | SHERIFF'S OFFICE | TILE | PTD WD | PTD GWB | PTD GWB | PTD GWB | PTD GWB | | PTD GWB | |
| 006 | CONFERENCE ROOM | CARPET TILE | PTD WD | PTD GWB | PTD GWB | PTD GWB | PTD GWB | | PTD GWB | |
| 007 | CLOSET | CARPET TILE | PTD WD | PTD GWB | PTD GWB | PTD GWB | PTD GWB | | PTD GWB | |
| 008 | VAULT | NONE | PTD WD | PTD GWB | PTD GWB | PTD GWB | PTD GWB | | PTD GWB | |
| 009 | TOWN CLERK | CARPET TILE | PTD WD | PTD GWB | PTD GWB | PTD GWB | PTD GWB | | PTD GWB | |
| 010 | CORRIDOR 1 | CARPET TILE | PTD WD | PTD GWB | PTD GWB | PTD GWB | PTD GWB | | PTD GWB | |
| 011 | ENTRY 2 | CT | PTD WD | PTD GWB | PTD GWB | PTD GWB | PTD GWB | | PTD GWB | |
| 012 | COVERED ENTRY | NONE | PTD WD | PTD GWB | PTD GWB | PTD GWB | PTD GWB | | PTD GWB | FINISHED SLAB |
| 013 | STAIRCASE | NONE | PTD WD | PTD GWB | PTD GWB | PTD GWB | PTD GWB | | PTD GWB | |
| 014 | IT CLOSET | CARPET TILE | PTD WD | PTD GWB | PTD GWB | PTD GWB | PTD GWB | | PTD GWB | |
| 015 | CORRIDOR 2 | CARPET TILE | PTD WD | PTD GWB | PTD GWB | PTD GWB | PTD GWB | | PTD GWB | |
| 016 | ENTRY 1 | CARPET TILE | PTD WD | PTD GWB | PTD GWB | PTD GWB | PTD GWB | | PTD GWB | |
| 017 | MENS TOILET | CT | CT | PTD GWB | PTD GWB | PTD GWB | PTD GWB | | PTD GWB | TILE WAINSCOT |
| 018 | WOMENS TOILET | CT | CT | PTD GWB | PTD GWB | PTD GWB | PTD GWB | | PTD GWB | TILE WAINSCOT |
| 019 | SUPPLIES & COPY | CARPET TILE | PTD WD | PTD GWB | PTD GWB | PTD GWB | PTD GWB | | PTD GWB | |
| 020 | CEO, ZEO, CLERK | CARPET TILE | PTD WD | PTD GWB | PTD GWB | PTD GWB | PTD GWB | | PTD GWB | |
| 021 | CORRIDOR 3 | CARPET TILE | PTD WD | PTD GWB | PTD GWB | PTD GWB | PTD GWB | | PTD GWB | |
| 022 | ASSESSOR & ASST. ASSESSOR | CARPET TILE | PTD WD | PTD GWB | PTD GWB | PTD GWB | PTD GWB | | PTD GWB | |
| 023 | TAX COLLECTOR | CARPET TILE | PTD WD | PTD GWB | PTD GWB | PTD GWB | PTD GWB | | PTD GWB | |
| 024 | ZONING FILES | NONE | N/A | PTD CMU | PTD CMU | PTD CMU | PTD CMU | | PTD CMU | |
| 025 | SUPERVISOR & BOOKKEEPER | CARPET TILE | PTD WD | PTD GWB | PTD GWB | PTD GWB | PTD GWB | | PTD GWB | |
| 026 | SPARE ROOM | CARPET TILE | PTD WD | PTD GWB | PTD GWB | PTD GWB | PTD GWB | | PTD GWB | |

WINDOW SCHEDULE

| UNIT | MODEL | R.O. | COLOR | LITE CUT | GLASS TYPE | NOTES |
|------|-------------------------------|----------------------------|-------|----------|----------------------|--|
| 1 | IAWN 3735 | 3'-1" w x 2'-11 5/8" h | WHITE | 3W2H | LOW 'E II' DBL INSUL | 4 9/16" JAMB w/ FIELD APPLIED EXTENSIONS |
| 2 | (2) IAWN 3735 factory mullied | 6'-1" w x 2'-11 5/8" h | WHITE | 3W2H | LOW 'E II' DBL INSUL | 4 9/16" JAMB w/ FIELD APPLIED EXTENSIONS |
| 3 | ITDH 3456 | 2'-10 1/2" w x 4'-8 1/4" h | WHITE | 2W1H | LOW 'E II' DBL INSUL | 4 9/16" JAMB w/ FIELD APPLIED EXTENSIONS |
| 4 | IAWN CUSTOM | 2'-3" w x 2'-9" h | WHITE | 3W2H | LOW 'E II' DBL INSUL | 4 9/16" JAMB w/ FIELD APPLIED EXTENSIONS |
| 5 | (3) IAWN 3735 factory mullied | 9'-1" w x 2'-11 5/8" h | WHITE | 3W2H | LOW 'E II' DBL INSUL | 4 9/16" JAMB w/ FIELD APPLIED EXTENSIONS |
| 6 | ITDH 4272 | 3'-6 1/2" w x 6'-0 1/4" h | WHITE | 2W1H | LOW 'E II' DBL INSUL | 4 9/16" JAMB w/ FIELD APPLIED EXTENSIONS |

DOOR SCHEDULE

| DOOR # | JAMB | EXT | INT | MATL | JAMB/HEAD | DOOR TYPE | THKNS | HDW SET | RATED | NOTES |
|--------|-----------|-----|-----|---------|-----------|-----------|-------|---------|-------|----------------------------------|
| 1 | +/- 7 5/8 | X | - | FG | - | G | 1 3/4 | A | - | |
| 2 | +/- 7 5/8 | X | - | FG | - | G | 1 3/4 | A | - | |
| 3 | 6 3/4 | - | X | comp wd | - | B | 1 3/8 | B2 | - | |
| 4 | 4 3/4 | - | X | comp wd | - | A | 1 3/8 | B2 | - | |
| 5 | custom | - | X | comp wd | - | custom | 1 3/8 | D | - | custom site built for half wall |
| 6 | 4 3/4 | - | X | comp wd | - | A | 1 3/8 | B2 | - | |
| 7 | 4 3/4 | - | X | comp wd | - | A | 1 3/8 | C | - | |
| 8 | +/- 6 5/8 | - | X | comp wd | - | A | 1 3/8 | A | - | confirm jamb |
| 9 | +/- 6 5/8 | - | X | comp wd | - | A | 1 3/8 | A | - | confirm jamb |
| 10 | +/- 7 5/8 | X | - | FG | - | G | 1 3/4 | A1 | - | |
| 11 | 4 3/4 | - | X | comp wd | - | A | 1 3/8 | B1 | - | |
| 12 | 4 3/4 | - | X | comp wd | - | A | 1 3/8 | A | - | |
| 13 | +/- 7 5/8 | X | - | FG | - | G | 1 3/4 | A | - | |
| 14 | 6 | - | X | comp wd | - | A | 1 3/8 | A | - | 90 min |
| 15 | 4 3/4 | - | X | comp wd | - | A | 1 3/8 | B | - | |
| 16 | +/- 8 | - | X | comp wd | - | D | 1 3/8 | A2 | - | confirm jamb |
| 17 | +/- 7 5/8 | X | - | FG | - | F | 1 3/4 | A2 | - | |
| 18 | 6 3/4 | - | X | comp wd | - | C | 1 3/8 | A | - | |
| 19 | +/- 7 5/8 | X | - | FG | - | G | 1 3/4 | A | - | |
| 20 | 4 3/4 | - | X | comp wd | - | A | 1 3/8 | C | - | |
| 21 | 4 3/4 | - | X | comp wd | - | A | 1 3/8 | C | - | |
| 22 | 4 3/4 | - | X | comp wd | - | A | 1 3/8 | A | - | |
| 23 | +/- 6 1/2 | - | X | comp wd | - | A | 1 3/8 | B | - | confirm jamb |
| 24 | 6 3/4 | - | X | comp wd | - | A | 1 3/8 | B | - | |
| 25 | 4 3/4 | - | X | comp wd | - | A | 1 3/8 | B | - | |
| 26 | 7 | - | X | comp wd | - | A | 1 3/8 | A | - | 90 min |
| 27 | 4 3/4 | - | X | comp wd | - | A | 1 3/8 | B | - | |
| 28 | +/- 7 5/8 | X | - | FG | - | G | 1 3/4 | A | - | |
| 29 | +/- 8 | - | X | comp wd | - | A | 1 3/8 | B | - | confirm jamb |
| 30 | +/- 8 | - | X | comp wd | - | A | 1 3/8 | D | - | 60 min |
| 31 | 6 3/4 | - | X | WD | - | custom | 1 3/8 | A | - | insulated custom site built door |
| 32 | 6 3/4 | - | X | WD | - | custom | 1 3/8 | A | - | insulated custom site built door |
| 33 | +/- 7 5/8 | X | - | FG | - | E | 1 3/4 | A2 | - | |



ARCHITECTURAL BUREAU
JOE IUVIENE AIA
P.O. BOX 228 - 29 MAIN STREET
CHESTERHAM NEW YORK 12037
(518) - 392 - 3650

ADDITIONS RECONFIGURATION
AND RENOVATION
NEW LEBANON TOWN HALL
14755 Route 22
NEW LEBANON NY

CONSTRUCTION DOCUMENTS
SCHEDULES
WALL TYPES DOOR TYPES
SCALE AS NOTED

REVISIONS

9/8/10
A